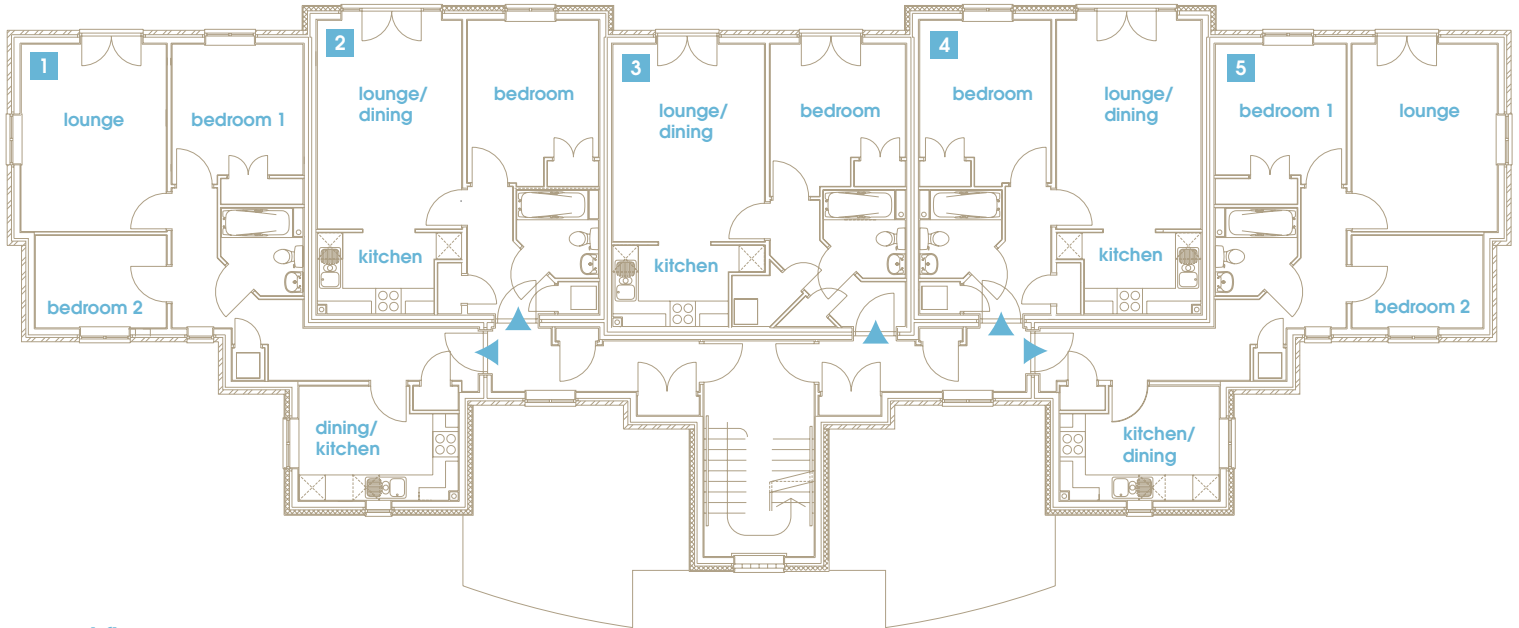


One and two bedroom apartments in Hemel Hempstead's vibrant new urban quarter. A part buy, part rent opportunity from Metropolitan Home Ownership.



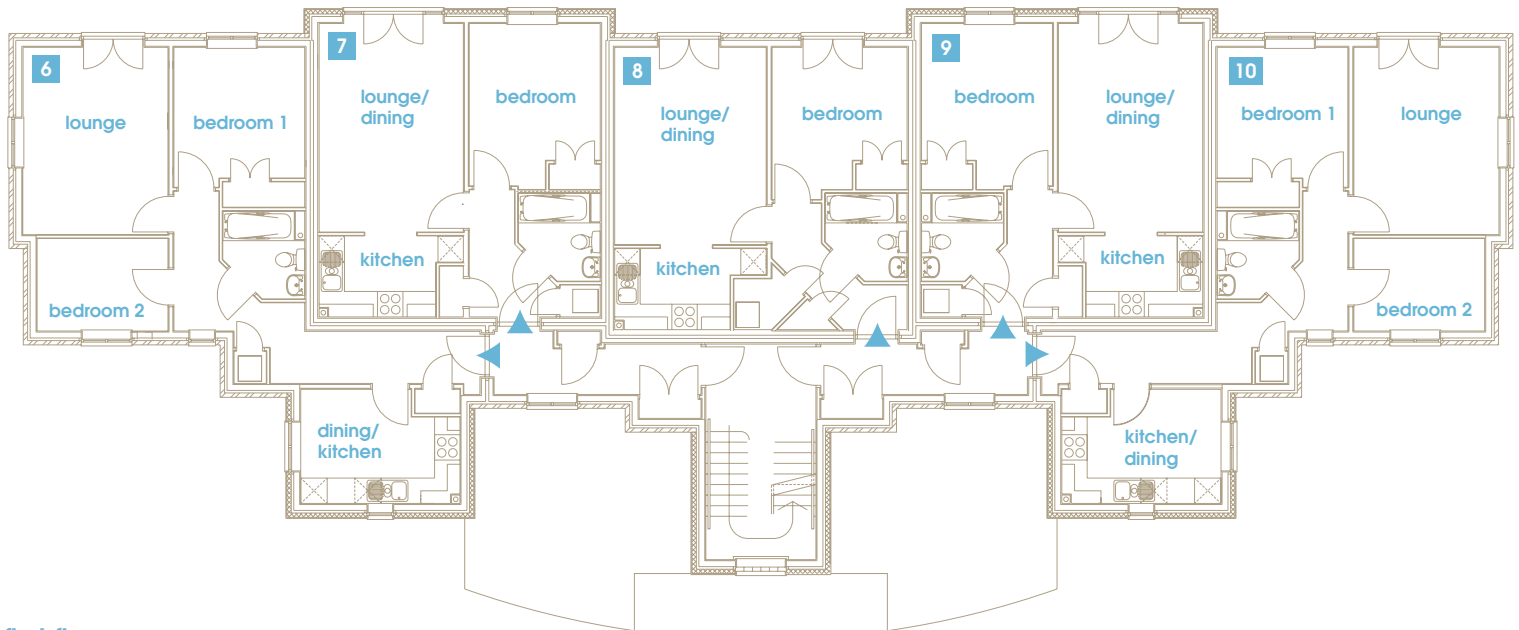
ground floor

apartment 1
 lounge - 14'6" x 11'4"
 dining / kitchen - 12'5" x 9'
 bathroom - 6'9" x 6'7"
 bedroom 1 - 10'2" x 10'2"
 bedroom 2 - 7'3" x 10'4"

apartments 2 & 4
 lounge / dining - 16'2" x 11'4"
 kitchen - 6'4" x 9'2"
 bathroom - 6'9" x 6'5"
 bedroom 1 - 12'7" x 10'3"

apartment 3
 lounge / dining - 15'4" x 11'9"
 kitchen - 6'4" x 9'
 bathroom - 6'9" x 6'7"
 bedroom 1 - 11'9" x 10'6"

apartment 5
 lounge - 14'6" x 11'4"
 dining / kitchen - 12'5" x 9'
 bathroom - 6'9" x 6'5"
 bedroom 1 - 10'2" x 10'2"
 bedroom 2 - 7'3" x 10'4"



first floor

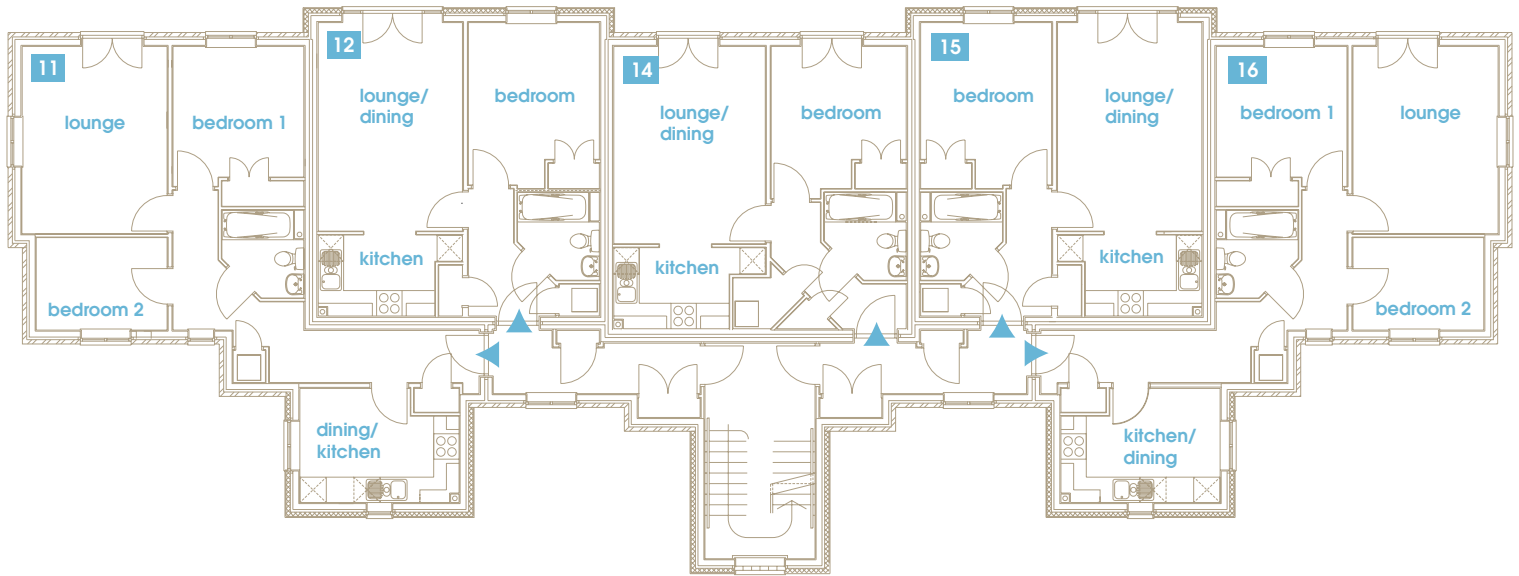
apartment 6
 lounge - 14'6" x 11'4"
 dining / kitchen - 12'5" x 9'
 bathroom - 6'9" x 6'7"
 bedroom 1 - 10'2" x 10'2"
 bedroom 2 - 7'3" x 10'4"

apartments 7 & 9
 lounge / dining - 16'2" x 11'4"
 kitchen - 6'4" x 9'2"
 bathroom - 6'9" x 6'5"
 bedroom 1 - 12'7" x 10'3"

apartment 8
 lounge / dining - 15'4" x 11'9"
 kitchen - 6'4" x 9'
 bathroom - 6'9" x 6'7"
 bedroom 1 - 11'9" x 10'6"

apartment 10
 lounge - 14'6" x 11'4"
 dining / kitchen - 12'5" x 9'
 bathroom - 6'9" x 6'5"
 bedroom 1 - 10'2" x 10'2"
 bedroom 2 - 7'3" x 10'4"

One and two bedroom apartments in Hemel Hempstead's vibrant new urban quarter. A part buy, part rent opportunity from Metropolitan Home Ownership.



second floor

apartment 11

lounge - 14'6" x 11'4"
 dining / kitchen - 12'5" x 9'
 bathroom - 6'9" x 6'7"
 bedroom 1 - 10'2" x 10'2"
 bedroom 2 - 7'3" x 10'4"

apartments 12 & 15

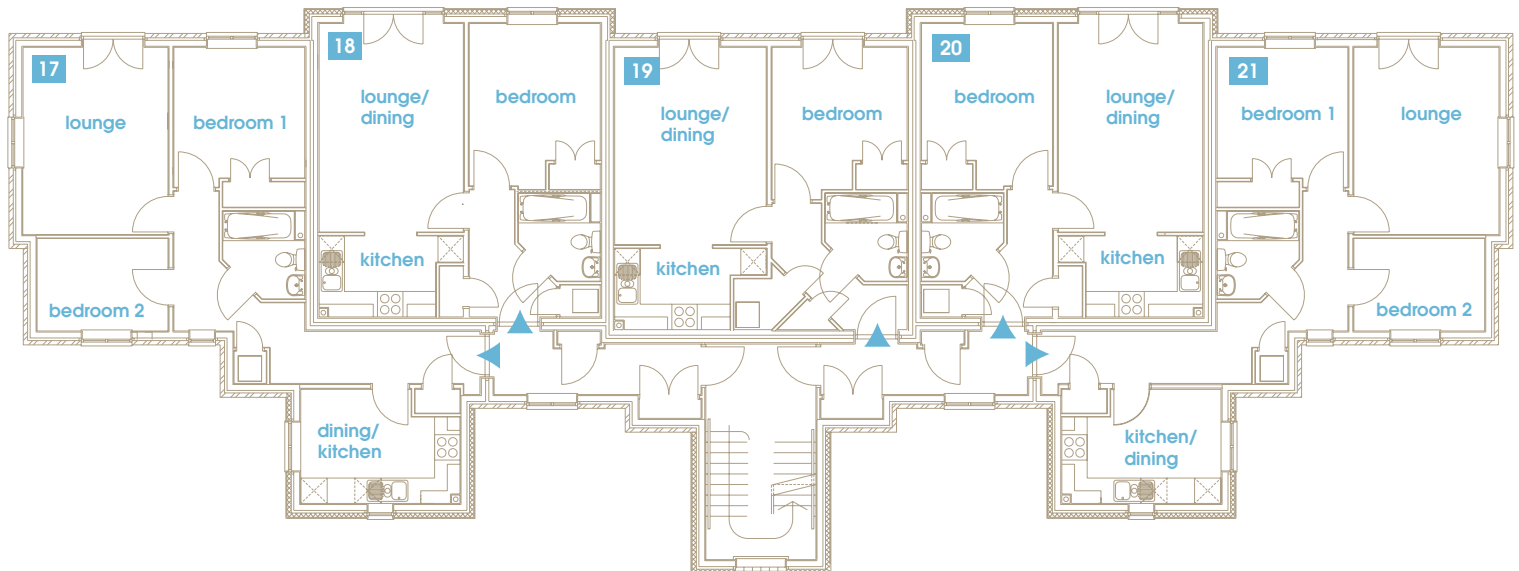
lounge - 16'2" x 11'4"
 kitchen - 6'4" x 9'2"
 bathroom - 6'9" x 6'5"
 bedroom 1 - 12'7" x 10'3"

apartment 14

lounge - 15'4" x 11'9"
 kitchen - 6'4" x 9'
 bathroom - 6'9" x 6'7"
 bedroom 1 - 11'9" x 10'6"

apartment 16

lounge - 14'6" x 11'4"
 dining / kitchen - 12'5" x 9'
 bathroom - 6'9" x 6'5"
 bedroom 1 - 10'2" x 10'2"
 bedroom 2 - 7'3" x 10'4"



third floor

apartment 17

lounge - 14'6" x 11'4"
 dining / kitchen - 12'5" x 9'
 bathroom - 6'9" x 6'7"
 bedroom 1 - 10'2" x 10'2"
 bedroom 2 - 7'3" x 10'4"

apartments 18 & 20

lounge - 16'2" x 11'4"
 kitchen - 6'4" x 9'2"
 bathroom - 6'9" x 6'5"
 bedroom 1 - 12'7" x 10'3"

apartment 19

lounge - 15'4" x 11'9"
 kitchen - 6'4" x 9'
 bathroom - 6'9" x 6'7"
 bedroom 1 - 11'9" x 10'6"

apartment 21

lounge - 14'6" x 11'4"
 dining / kitchen - 12'5" x 9'
 bathroom - 6'9" x 6'5"
 bedroom 1 - 10'2" x 10'2"
 bedroom 2 - 7'3" x 10'4"